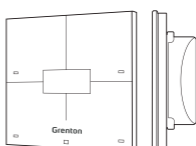


User Manual Smart Panel Custom Wood

SPS-604-T-0x

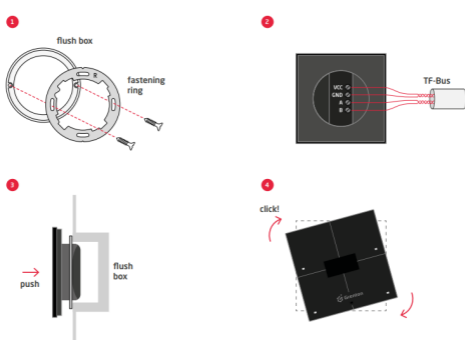
Replacing traditional wall switches, Grenton Smart Panel allows to control not only the light, but also any device in a smart home. The Panel provides information from sensors, system parameters or its functional data. The versatile and intuitive control interface makes it easy and quick to control an individual device or the whole home.



1. Technical data

Device power supply	5-24Vdc
Maximal power consumption	0,48W
Maximal device current	20mA (@24 V)
Maximal wire cross section	1,5mm ²
Weight	120g
Fixing	flush mounted box Ø 60mm
Dimensions (H/W/D)	surface part: 80/80/10mm, concealed part: Ø 50mm / depth: 22mm
Operating temperature range	10 to 35°C
Humidity range	40 do 70%

2. Wiring diagram



VCC	power supply signal
GND	power supply ground signal
A	TF-bus A signal
B	TF-bus B signal

3. Usage and maintenance guidelines

The front of the touch panel is made of natural solid wood covered with protective varnish. Occurring natural differences between the individual copies are allowed, which makes each product original. The surface of each panel can give a different optical impression, which is proof of the natural origin of the material. Different species of trees, as well as the structure, graining, differences in shades of natural wood, the way it is processed and varnished have an impact on the appearance of each device.

Rules of usage and maintenance:

- The product should not be used in sunny places and in the direct proximity of heat sources (for example: fireplaces, radiators, etc.) or exposed to direct sunlight, moisture and chemicals.
- Failure to comply with the instructions may cause distortion and cracking of wooden parts, which may lead to damage to the device.
- Clean the panel front with a dry, soft and clean cloth. If soiling occurs, use a damp cloth and dry the area to be cleaned immediately with a dry soft cloth.
- The use of chemicals can damage the surface of the varnish or wood covered with it.

4. Warnings and Cautionary Statements



ATTENTION I

- Before proceeding with the assembly, read the installation schematics and full instructions available at www.grenton.com. Failure to follow the guidelines contained in the instructions and other requirements of due care valid as a result of the nature of the equipment (device) may be dangerous to life / health, damage the device or installation to which it is connected, damage other property or violate other applicable regulations. The manufacturer of the device, Grenton Sp. z o. o. does not bear any responsibility



DANGER I

- Danger to life caused by electric current!
- The components of the installation (individual devices) are designed to work in a home

for the damage (property and non-property related) resulting from the assembly and / or use of the equipment not in accordance with the instructions and / or due diligence in handling the equipment (device).

- Device power supply, permissible load or other characteristic parameters have to be in accordance with the device specification, described in particular in the "Technical data" section.
- The product is not intended for children and animals.
- If you have technical questions or comments about the device operation, contact Grenton Technical Support.
- Answers to frequently asked questions can be found at: www.support.grenton.pl

electrical installation or directly in its vicinity. Incorrect connection or use may cause a fire or electric shock.

- All work related to the installation of the device, in particular works involving interference in the electrical installation, may be performed only by a person with appropriate qualifications or licences.
- When installing the device, make sure that the power supply voltage is disconnected from the circuit in which the device is connected or near which the assembly takes place.

5. CE Marking

The manufacturer declares that the device is in full compliance with the requirements of EU legislation that includes the directives of a new approach appropriate for this equipment. In particular, Grenton Sp. z o. o. declares that the device fulfills the requirements on safety, specified by law, and that it conforms to the na-

tional regulations that implement the appropriate directives: The Directive on the electromagnetic compatibility (EMC - 2014/30/UE) and the Directive on the limitation of the use of specific substances in electrical and electronic equipment (RoHS II - 2011/65/UE).



6. Warranty

Warranty available at: www.grenton.com/warranty

7. Manufacturer Contact Details

Grenton Sp. z o.o.
ul. Na Wierzchowinach 3
30-222 Kraków, Poland
www.grenton.com