

infibity

Water Leak Sensor

user manual



Please read the user manual carefully before operating.
Please keep the user manual for future reference.



Product Introduction

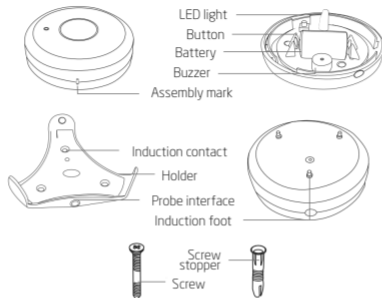
Infibity Water Leak Sensor is a wireless (Z-Wave) sensor that allows for detecting leaks and is compatible with the Grenton Smart Home system. The module can be powered by batteries. To use the module in the Grenton Smart Home system, you need to add it to the Grenton CLU Z-Wave central unit. The sensor, once added to the system, sends information every time its state changes, i.e., when a leak occurs. In case of a leak, the LED light keeps on and the buzzer will make sound.

The device can also be used with any other Z-Wave controller and can realize associations with other Z-Wave devices. Please refer to our website www.infibity.com for more information.

Technical Parameters

| | |
|-------------------------|---|
| Power | CR2-3V x1 |
| Standby current | 3µA |
| Battery life | 2 years |
| Operational temperature | 0-40°C |
| Radio frequency | 868.4MHz EU |
| Range | Up to 40m indoors (depending on the building structure), up to 80m outdoors |
| Size (L x W x H) | 68 x 68 x 34mm |

Product elements



Items list

| | |
|---------------|-------|
| Leak sensor | 1 pc |
| Holder | 1 pc |
| Probe | 1 pc |
| Battery | 1 pc |
| Screw | 2 pcs |
| Screw stopper | 2 pcs |
| User manual | 1 pc |

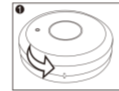
Installation Steps

1. Holder Installation

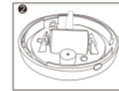


Fix the holder with screws and screw stopper

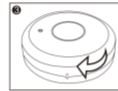
2. Battery Installation



Open the water sensor

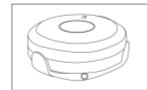


Install the battery



Close the water sensor

3. Fix the leak sensor on the holder



NOTE: When assembling the leak sensor, please align the assembly mark. When fixing the leak sensor on the holder, please align the induction foot and the induction contact.

Tips

- Do not install in the place near water vapor or smoke.
- Do not install the leak sensor main body and the probe in the place where water is soaked.
- The sensor probe should be placed on the surface of the water leakage.
- Make sure the leak sensor is placed in the Z-Wave network range of Grenton CLU Z-Wave central unit.

The status of LED

| Color | LED Status | Description |
|-------|---------------------------|---------------------------------|
| Red | Light On 1s when Power On | Not added to the Z-Wave network |
| | Light on always | Water leakage is detected |
| Green | Light On 1s when Power On | Added to the Z-Wave network |
| White | Light On 2s | Waiting time |
| Blue | Blink with 1s Interval | Add to Z-Wave network |
| | Blink with 500ms Interval | Remove from Z-Wave network |
| Pink | Light On 2s | Waiting time |

Configuration

Add Door Sensor to Z-Wave Network

- Disassemble the main body of the sensor and install the battery.
- Set your Z-Wave controller into inclusion mode.
- Press and hold the button on the sensor for 5s until the white LED lights up. The module will enter inclusion mode - the blue LED will start blinking every 1s.
- The green LED will light up for 1s at the end of the Inclusion process.

When using a Z-Wave controller based on the S2 security protocol, it may be necessary to enter the DSK password. It can be found on the casing or packaging along with the Z-Wave QR code. The device supports SmartStart function. No further action is required and the SmartStart product will be added automatically within 10 minutes of being switched on in the network vicinity. Make sure that the Z-Wave controller is also equipped with the SmartStart feature.

NOTE: Upon sending the configuration to the CLU Z-Wave controller, if you change the ZWAVE_WAKEUP->Interval parameter, press the button on the sensor to wake it up and save the settings.

Remove Door Sensor from Z-Wave Network

- Make sure the sensor is powered on.
- Set your Z-Wave controller into exclusion mode.
- Press and hold the button on the sensor for 5s until the white LED lights up. The module will enter exclusion mode - the blue LED will start blinking every 500ms.
- The red LED will light up for 1s at the end of the Exclusion process.

Restore Door Sensor to Factory Default Settings

- Disassemble the main body of the sensor.
- Make sure the sensor is powered on.
- Press and hold the button on the sensor for 10s until the pink LED lights up.
- Release the button.

Device Application

The device is not intended for use in any security systems. Data from the device is for informational purposes only and may contain inaccuracies. Under no circumstances shall Grenton Sp. z o.o. be liable for damages arising from the use of the device and/or information provided by Grenton Sp. z o.o. contrary to its intended purpose.

More information

More information can be found on the website www.infibity.pl/manuals.

Warranty

The warranty is available at: www.infibity.com/warranty.

Company data

Grenton Sp. z o.o.
ul. Na Wierzchowinach 3
30-222 Kraków, Poland
support@infibity.com
+48 12 2002 606