



# Radiator Thermostat

## user manual



Please read the user manual carefully before operating.  
Please keep the user manual for future reference.



### Product Introduction

Infibity Radiator Thermostat is a wireless (Z-Wave) thermostat head that allows for effective room temperature management, compatible with the Grenton Smart Home system. To use the module in the Grenton Smart Home system, it must be added to the Grenton CLU Z-Wave central unit. Once added to the system, the module provides information on the percentage of valve opening and the current ambient temperature. The device can also be used with any other Z-Wave controller and can realize associations with other Z-Wave devices. Please refer to our website [www.infibity.com](http://www.infibity.com) for more information.

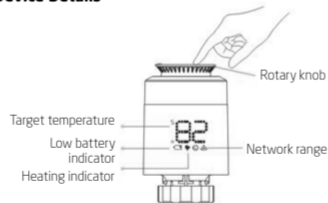
### Technical Parameters

Power	2x AA
Standby current	30µA
Operating current	20mA
Temperature setting range	5-30°C
Temperature setting accuracy	0.5°C
Measured temperature range	0-50°C
Operating humidity	up to 85% non-condensing
Radio frequency	868.4MHz EU
Range	Up to 45m indoors (depending on the building structure), up to 80m outdoors
Size (L x W x H)	54 x 54 x 94mm

### Product Elements



### Device Details



**NOTE:** For a set temperature <5°C, the display will show "OF", for a set temperature >30°C, the display will show "On".

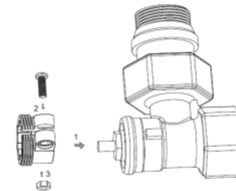
### Installation Steps

**NOTE:** Add the module to the Z-Wave network before its installation. The module should be in its intended installation location while being added to the Z-Wave network.

1. If the module cannot be placed directly on the valve, use the appropriate adapter.

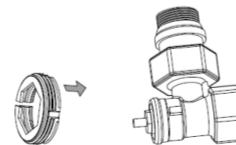
#### Adapter Danfoss

After fixing the valve connector, tighten the screw.



#### Adapter Caleffi

Put the adapter directly on the valve.



#### Adapter Giacomini

Install a short sleeve onto the thermostat head stem and place the adapter directly on the valve.



2. Remove the cover (press the button on the cover and slide it upwards), then remove and insert the battery to reset the module.
3. Wait until the display stops flashing "LA".
4. Install the module on the valve.
5. Press the rotary knob (upper part of the module), after which the "LA" will start flashing again.
6. Installation complete - the temperature will appear on the display.

### Configuration

#### Add The Module to Z-Wave Network

1. Make sure the module is turned on.
2. Set your Z-Wave controller into inclusion mode.
3. While in the "OF" state, press the rotary knob (upper part of the module) 3 times, after which "-" will appear on the display.
4. "PA" will appear on the display to indicate the completion of the adding process, and the network range icon will be displayed. Otherwise, repeat the procedure.

When using a Z-Wave controller based on the S2 security protocol, it may be necessary to enter the DSK password. It can be found on the sticker on the casing after removing the cover.

The device supports SmartStart function. After scanning the QR code, remove the batteries for a few seconds to reset the device. Once the device is powered on again, it should be visible in the Z-Wave network. Make sure that the Z-Wave controller is also equipped with the SmartStart feature.

#### Remove The Module from Z-Wave Network

1. Make sure the module is turned on.
2. Set your Z-Wave controller into exclusion mode.
3. While in the "OF" state, press the rotary knob (upper part of the module) 3 times, after which "-" will appear on the display.
4. On completion of the removal process, "OF" will appear on the display, and the network range icon will disappear. Otherwise, repeat the procedure.

#### Restore The Module to Factory Default Settings

1. While in the "OF" state, press and hold the rotary knob (upper part of the module) for at least 5 seconds.
2. Release the button - "OF" on the display will start flashing.
3. After a successful reset, "OF" will be displayed for 2 seconds, after which it will disappear.

### Additional Functions

#### Child Lock Function

To prevent children from changing the temperature settings, you can activate the lock function by holding down the rotary knob (upper part of the module) for 10 seconds until "LC" appears on the display. Hold it again for 10 seconds to unlock.

#### Anti-Freezing Function

The valve will open when the temperature drops below 5°C and close when it rises to 8°C.

#### Open Window Function

When the ambient temperature drops by 6°C within 4 minutes, the module will automatically close the valve, and "OP" will appear on the display. When the temperature rises by 2°C, the module will return to normal operation.

#### Anti-Scale Function

If the valve has not been opened for at least 2 weeks, the module will open it for 30 seconds every 2 weeks, and "AS" will appear on the display.

### More information

More information can be found on the website [www.infibity.pl/manuals](http://www.infibity.pl/manuals).

### Warranty

The warranty is available at: [www.infibity.com/warranty](http://www.infibity.com/warranty).

### Company data

Grenton Sp. z o.o.  
ul. Na Wierzchowinach 3  
30-222 Kraków, Poland  
support@infibity.com  
+48 12 2002 606